

RECOM™

Pre-stained Protein Markers

Medium Range

- Cat.No.REC 004
RECOM™ BLUE Medium Range
- Cat.No.REC 005
RECOM™ DUAL Medium Range
- Cat.No.REC 006
RECOM™ SPECTRUM Medium Range

Store at
-20°C

25-50 Lanes per Marker (250 µl)

Applications

- Recombinant
- Blue/Dual/ Colour
- Accurate and Medium Size Range
- Highlighted Bands for increased discrimination
- Ladder Banding

RBC
It's the Joy of Discovery

Real Biotech Corporation

Real Biotech Corp. is a leading R&D based life science solutions provider.
For more information on our extensive and innovative life science range please visit our web site.

Introduction

Real Biotech's pre-stained recombinant protein markers are the best in class reference proteins for SDS-PAGE analysis. 7 discrete recombinant protein bands provide a wide and accurate range of reference. Marker is ready-to-load on SDS-PAGE gels with no requirement for boiling. Wide Range size markers are suitable as reference banding for proteins between 15 kDa to 100 kDa.

The proteins are covalently linked to chromophores, enabling visible detection during electrophoresis or following electrophoretic transfer. The 50kDa protein band is present at double concentration for easier band identification.

Due to coupling of chromophore to the proteins in pre-stained markers, their apparent molecular weight may shift slightly in SDS-PAGE relative to un-stained proteins. This shift does not change batch-to-batch, therefore we have labelled the prestained markers accurately to account for this shift. For highest accuracy (>95%), RECOM™ un-stained protein markers are recommended.
REC007: RECOM Unstained Wide Range
REC008: RECOM Unstained Ruler

Recommended loading volume

Optimum 10 µl/lane for a mini-gel, load range 5-10 µl (10x8cm², 0.75mm or 1mm thick)
Optimum 20 µl/lane for a large-gel, load range 15-30 µl (30x20cm², 1mm or 1.5mm thick)

Recommended storage condition

-20°C for one year. For best results please aliquot into small volumes and store at -20°C. For temporary storage 4°C is recommended, prevent freezing & thawing.

Caution

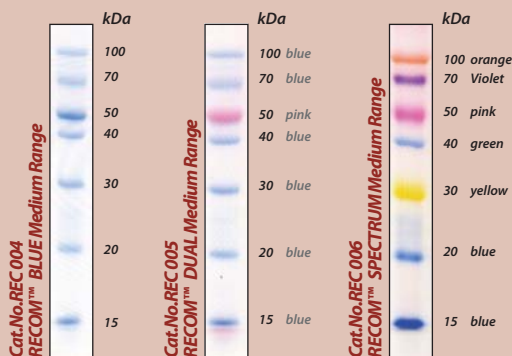
Repeated freezing & thawing, long-term storage and re-use of pipette tip may degrade proteins rapidly. These markers are provided as a ready to load format, meaning that there is no need to boil before use. If visible precipitation of SDS occurs following long-term storage at -20°C precipitant may be dissolved by a short heating step at 50-80°C for a few minutes.

RECOM™

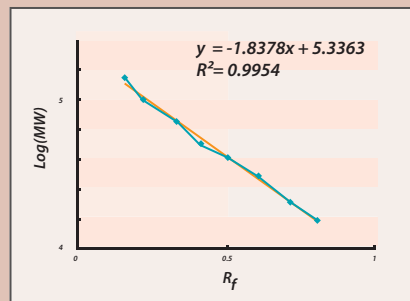
Pre-stained Protein Markers

Medium Range

Medium Range Markers



Cat.No.REC 004 RECOM™ BLUE Medium Range



Standard curves are generated by plotting log molecular weight (MW) versus migration distance (R_f) of each band in RECOM Medium Range Pre-Stained marker (REC004) through a 10% gradient gel.